

Autumn Fairs 2019

Once again a number of fairs trading in Asian art will take place this autumn, in various locations in Europe as well as in the US and in Asia.

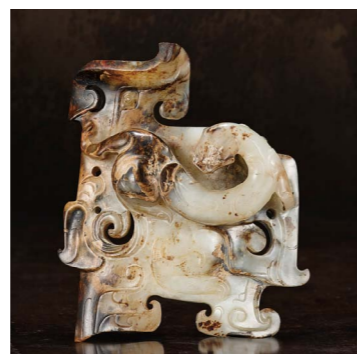
In **Hong Kong, Fine Art Asia** will run from 4 to 7 October at the Hong Kong Convention and Exhibition Centre. This year's fair will see the debut of the Masterpiece Pavilion, bringing the London art fair's established vision of cross-collecting to Hong Kong. The pavilion will showcase Western works of art across different eras and styles.

Tenzing Asian Art will be exhibiting works covering the entire Himalayan region, from sculptures in stone, wood and metal to paintings of deities, bodhisattvas and teachers, all from the Vajrayana or tantric path of Buddhism. Highlights include an image of the female aspect of Vajrasattva from 11th century Kashmir. Cast in silver with gold and copper inlay and inscribed in Sanskrit on the base, the statue is identical in design and workmanship to two sculptures that were part of a Vajradhatu mandala, one in The Metropolitan Museum of Art and the other in a US private collection. The fact that the image is made of silver suggests a royal commission.



Female aspect of Vajrasattva
Kashmir, 11th century
Silver with gold and copper inlay, height
11 cm
Tenzing Asian Art

Rasti Chinese Art will present two exhibitions: 'Arcane Realms: Buddhist and Daoist Art' and 'Works of Art'. The first consists of a group of wall paintings from the 10th century to the Ming dynasty, complemented by a selection of sculptures in various



Plaque
China, Western Han dynasty (206
BCE–8 CE)
Jade, 8 x 6.7 cm
Rasti Chinese Art

materials. One of the earliest dated wall paintings in the show is a Five Dynasties/early Song period flying apsara from a French private collection, which is similar to an example in C. T. Loo's *Chinese Frescos of Northern Sung*. The second exhibition shows the ingenuity and variety of Chinese art, with 32 objects in diverse materials from bone and ivory to jade and coco de mer. Among the selection are three archaic jades, one a mottled dark and pale grey jade dragon plaque previously in the W. W. Winkworth Collection. This unusual object possibly decorated a sword or was placed across the chest of the owner and is closely related to an example in the National Palace Museum, described as a decorative panel.

Known for dealing in scholar's works of art and especially for China lacquer is **Martin Fung**. Lacquer



Stem cup
China, Ming dynasty (1368–1644), 16th
century
Lacquer, diameter 14.5 cm
Martin Fung

will be the focus of his exhibition at the fair this year, with a 16th century carved cinnabar stem cup and a 15th century 'peony and *lingzhi*' lidded box among the highlights. **Ever Arts** will be showing a



Display cabinet
China, early Qing dynasty
(1644–1911)
Huanghuali, 185 x 78 x 42 cm
Ever Arts

selection of Ming furniture and bamboo scholar's objects. Noteworthy are an early Qing dynasty bamboo brushpot carved with a scene from the Yuan dynasty drama *Romance of the Western Chamber* and a *huanghuali* display cabinet from the same era. **Chelesa Art** will present a solo exhibition by the ink painter Ren Zhong. Meticulously composed, Ren Zhong's paintings are a distillation of ancient wisdom, as well as being stylistically innovative and original. The show will feature a selection of his recent works.



Pine, Bamboo and Plum
– Pine
By Ren Zhong (b. 1976)
Ink on silk, 99 x 67.5 cm
Chelesa Art

Running simultaneously with Fine Art Asia and at the same venue is **Ink Asia**.

Among the exhibitors is **Alisan Fine Arts**, whose show will focus on landscape paintings by six artists



Guanyin Grotto
By Lui Shou-kwan (1919–75)
Ink and colour on rice paper
Alisan Fine Arts

from China, Hong Kong and Taiwan to demonstrate the evolution and development of this genre in recent years. Represented are Fang Zhaoling and Lui Shou-kwan from Hong Kong, Li Huasheng, Nan Qi and Tai Xiangzhou from China, and Lee Chun-yi from Taiwan, who studied under Liu Guosong. A highlight of the show is a 1969 work by Lui Shou-kwan depicting the resort Guanyin Grotto in Hong Kong's Tsuen Wan. Lui was the pioneer of the New Ink Movement in Hong Kong.

In **London**, the dates of **Frieze Masters** in Regent's Park this year are 3 to 6 October. Among this year's participants is **Gisèle Croës**, with a variety of Chinese artworks ranging from ancient bronzes to Qing dynasty carvings. Also on view will be a pair of large vases in gilt bronze and cloisonné enamel from



One of a pair of vases
China, Qing dynasty (1644–1911),
Qianlong period (1735–96)
Gilt bronze and cloisonné enamel, height
102.5 and 100 cm
Gisèle Croës
(Photo: Studio R. Asselberghs – Frédéric
Dehaen)

the Qianlong period of the Qing dynasty. The lidded vases are in the form of double gourds.

Meanwhile, **Paris** will see the return of **Parcours des Mondes** from 10 to 15 September, held in various galleries in the area of Saint-Germain-des-Prés, as well as **La Biennale** from 13 to 17 September, taking place at the Grand Palais.

Over in **New York**, **TEFAF** returns to the Park Avenue Armory from 1 to 5 November. New to the fair this year is a series of curated booth collaborations, with exhibitors showing historical and contemporary works across collecting categories and media in the same space. **Sebastian Izzard** returns to the fair with Japanese figural prints dating from the introduction of two-colour printing in the 1740s to the end of the 18th century. Prints by Suzuki Harunobu from the early 1760s until his death in 1770 are especially well represented, while works portraying sumo wrestlers by Katsukawa Shunshō and the iconic *Wistful Love* by Kitagawa Utamaro



Winter Cherry, from the series 'Seven Fashionable Bad Habits'

By Katsushika Hokusai (1760–1849), c. 1801–4
Colour woodblock print with mica, 38.2 x 26 cm
Sebastian Izzard

will also be on view. A highlight is a print by Hokusai showing women blowing ground cherry pits to produce a squeaking sound, from the series 'Seven Fashionable Bad Habits'. Only two impressions of the print are known.